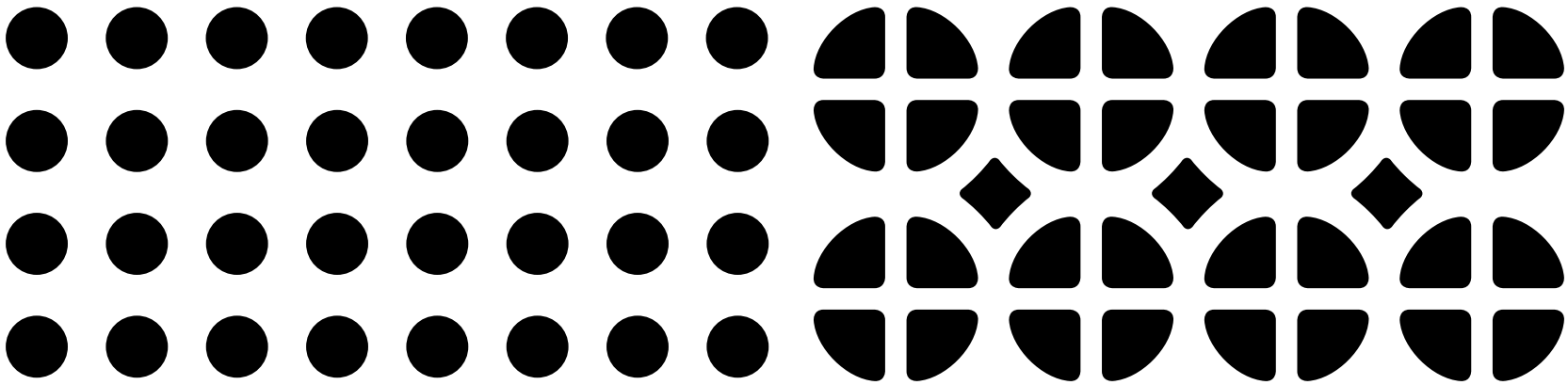


Raised Access Floor Systems





Raised Access Floor Systems

# Contents

Company Overview	Aluminum Raised Access Floors	Panel Options	Understructure Systems	Hae Kwang Advantages and Experiences
· 04 ..... Greetings from members of Hae Kwang	· 10 ..... Solid Panels	· 16 ..... Corner Locking System	· 24 ..... Pedestals	· 31 ..... Hae Kwang Advantages
· 06 ..... Company Information	· 11 ..... Perforated Panels	· 17 ..... Epoxy Powder Coating	· 25 ..... Stringer	· 32 ..... Select Experiences
· 07 ..... Certifications and Recognitions	· 12 ..... Grating Panels	· 18 ..... Aluminum Damper	· 26 ..... Seismic Bracings	
	· 13 ..... View Panels	· 19 ..... Edge Trim	· 27 ..... Reinforcement System	
		· 20 ..... Nickel Chrome(NiCr) Plating	· 27 ..... Air Separation System	
		SUS Plate	Spanning System	
		Checked Plate	· 28 ..... Understructures	
		· 21 ..... PVC Tile Color Options	· 30 ..... Understructure Testing and Simulation	



**HAE KWANG,**  
**Delivering Value through**  
**Competitive Products**  
**and Services**

Since 1987, Hae Kwang has accumulated technical expertise in designing, manufacturing, and installing Aluminum Raised Access Floors and understructure systems from more than hundreds of cleanroom projects around the world. Our goal is clear. We aim to support the high-tech industry's continuous innovation by proactively meeting the needs of our customers through high-quality and competitive products and services. We are very proud to be a leading supplier of Aluminum Raised Access Floor Systems to major semiconductor and display manufactures around the world, and we will continue our efforts to understand what our current and potential customers need and timely react to provide the best solutions.

Through diverse studies and technology development, Hae Kwang will extend the field of high-tech cleanroom factory-related products and services to respond to changes in the future. We will make an effort to be a leading company and help in the development of our customers.

Thank you very much for your interest in our products and we look forward to building a strong and lasting relationship with you.

- From the executives and staff members of Hae Kwang -





Company Information

Certifications and Recognitions

Company Milestones

1987 06 23	Incorporation
1990 11 13	Selected as a promising small- and medium-sized enterprise by the Small & Medium Business Administration of Korea
1998 01 14	Acquired ISO 9001 Quality Management System Certification
1996 11 30	Awarded a \$5 million Export Presidential award by the Korean International Trade Association
1997 05 01	Approved as a technical innovation and development business entity by the small and Medium Business Administration
1998 11 30	Awarded a \$10 million Export Presidential award by the Korean International Trade Association
2000 12 18	Incorporated U.S. subsidiary, HK Techfloor LLC in Phoenix, AZ
2004 11 30	Awarded a \$20 million Export Presidential award by the Korean International Trade Association
2007 04 26	Selected as an INNO-BIZ company
2007 07 12	Selected as Innovative Small & Medium Sized Enterprise by INNO-BIZ
2010 04 26	Acquired INNO-BIZ extension certification
2012 01 06	Acquired INNO-BIZ extension certification
2013 09 24	Acquired OHSAS 18001 certification Norway DNV 109274-2012-HSO-KOR-DNV
2014 05 07	Selected as "Global Growth Potential Company" by the Korea Trade Insurance Corporation
	Certified as "Root Technology Company (Specialization in Die Casting)" by the Small & Medium Business Administration of Korea

Intellectual Properties

Number of	Patents	Design	Trademarks
Registration in Korea	12	21	6
Registration outside Korea	8	24	6

※ Countries including the U.S., Germany, China, and Japan

Major Customers



[ISO 9001]



[ISO 14001]



[OHSAS 18001]



[KDB Global Star Certification]



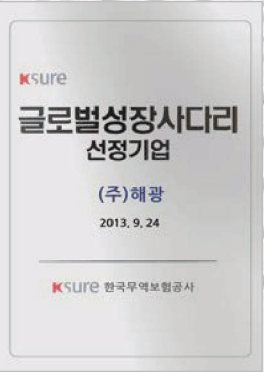
[Certificate of Innovative Small & Medium Sized Enterprise]



[Certificate of Promising Small and Medium Sized Enterprise]

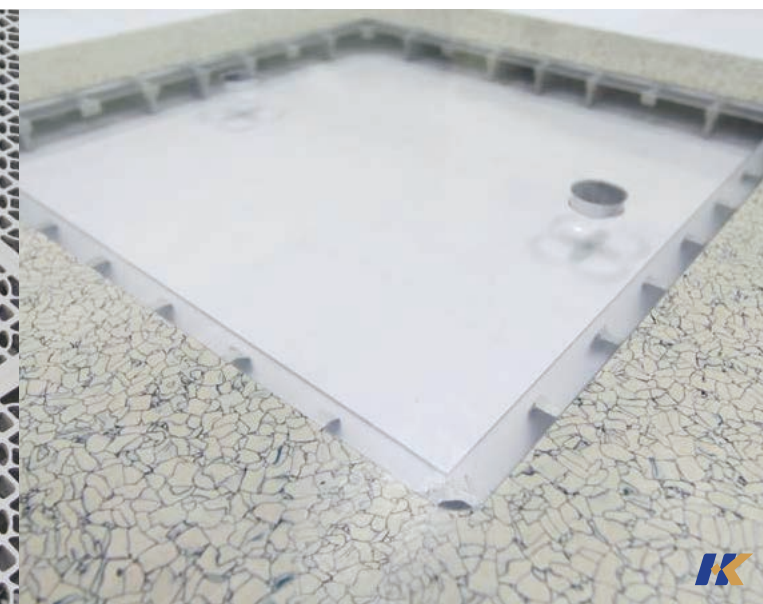
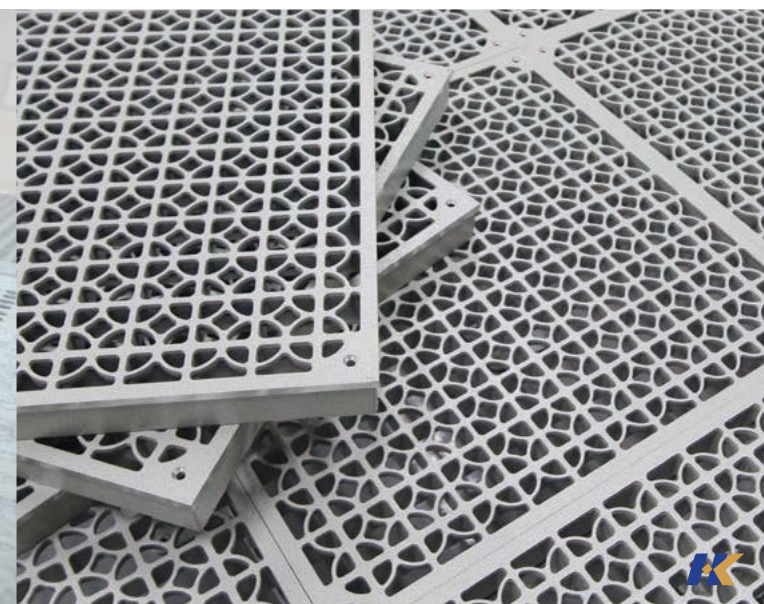
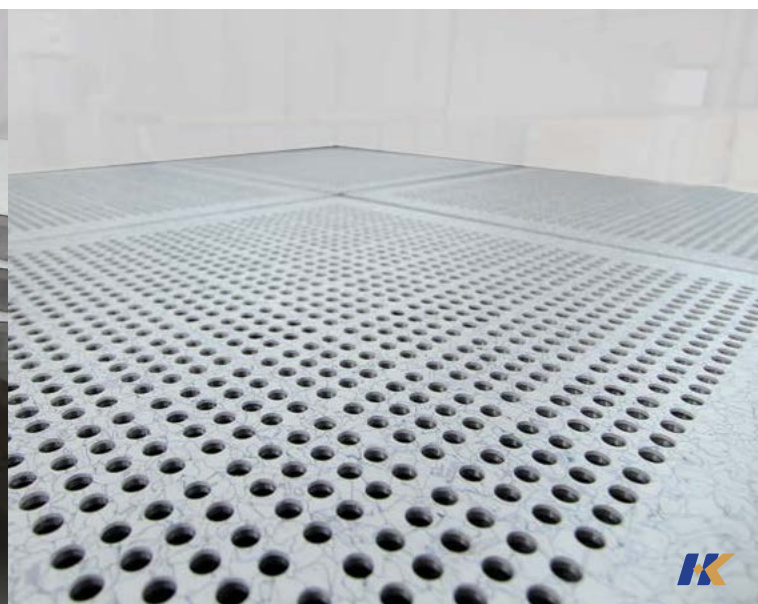


[Certificate of Root Technology Company (Specialized in Die Casting)]



[Certificate of Global Growth Potential Company]



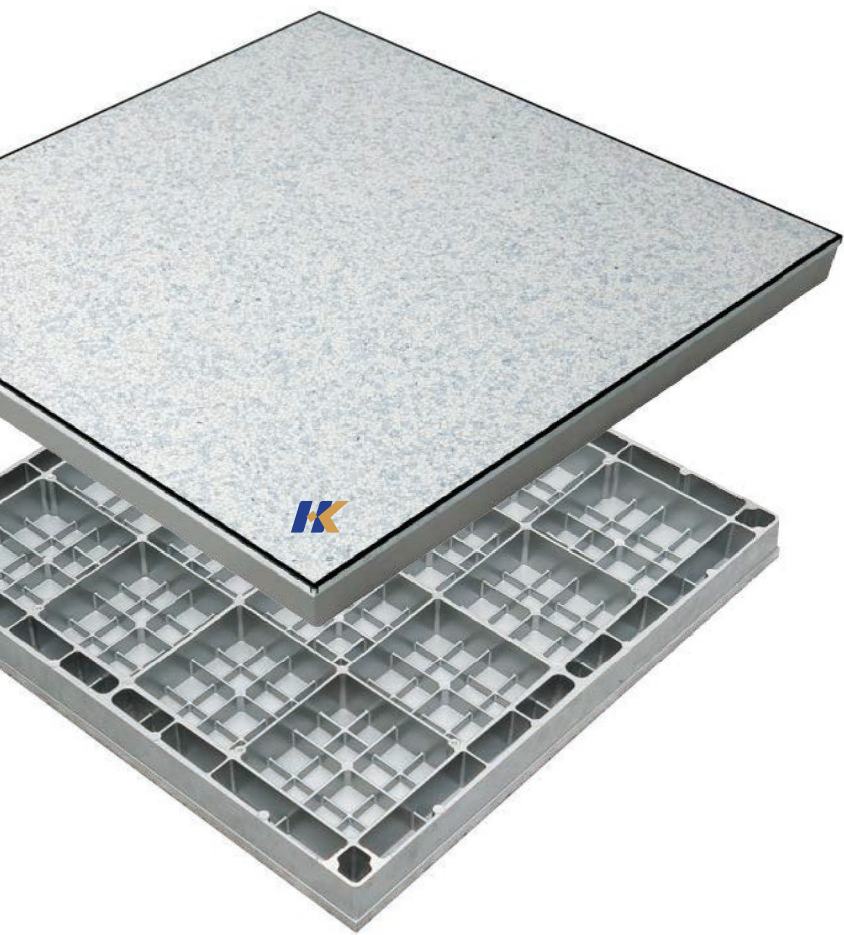


## HAE KWANG Aluminum Raised Access Floors

- 10 ..... Solid Panels
- 11 ..... Perforated Panels
- 12 ..... Grating Panels
- 13 ..... View Panels



# Solid Panels



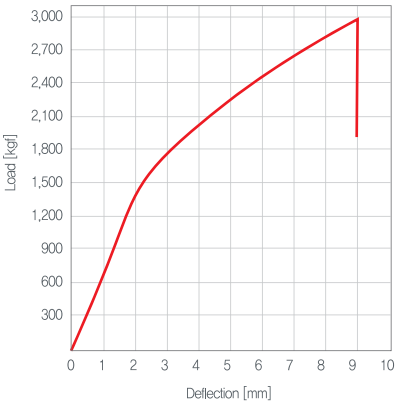
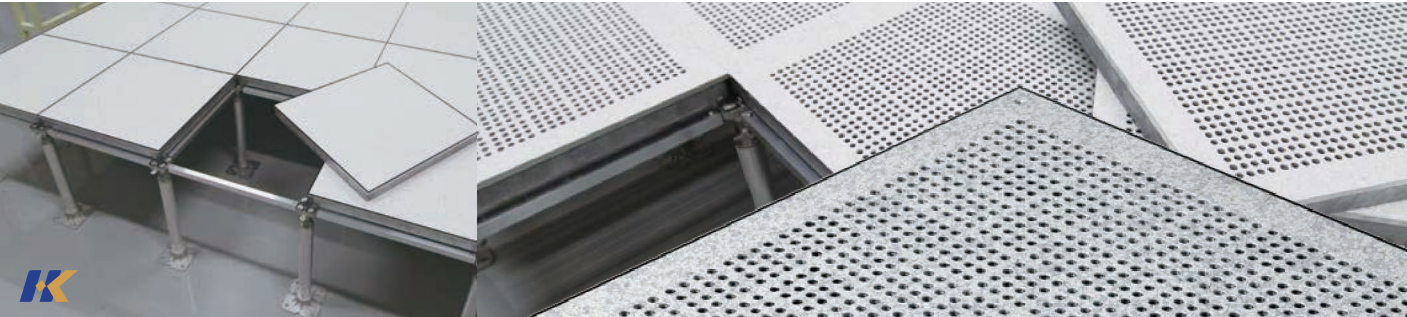
## Solid Panels

Ideal for areas of the heaviest loading requirement, Hae Kwang's Solid Panels have unique lattice structures that allow for optimum weight dispersion and secure installation of heavy tools inside cleanrooms.

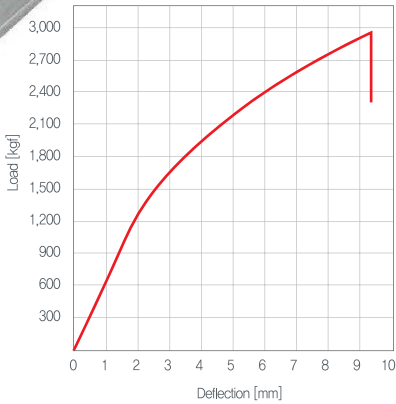
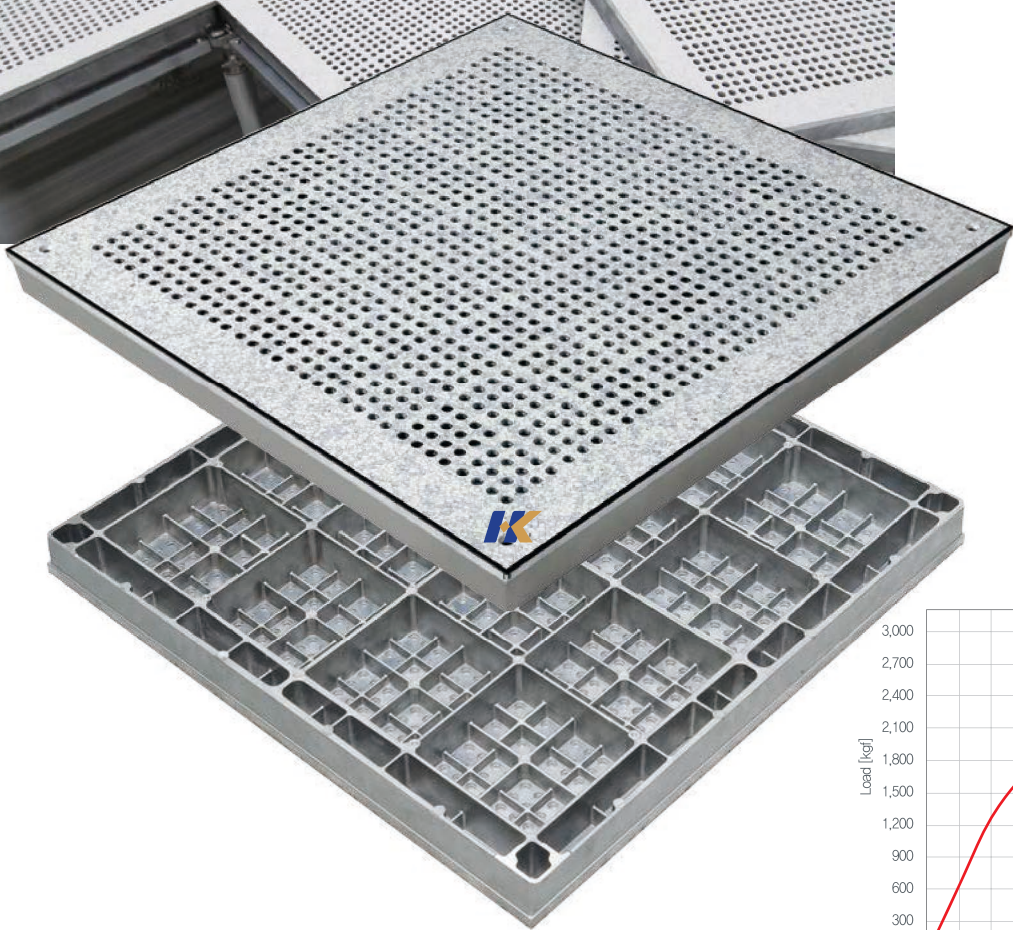
### Advantages

- Excellent loading capacity: 500~3,000 kgf @ 2 mm deflection (=1,100~6,600 lbf @ 0.08 inch deflection)
- Precisely manufactured to meet dimensional requirements with minimum tolerance
- Minimum emission of Volatile Organic Compounds (VOC's)
- Strict quality control to meet electrostatic or conductivity requirements
- Extremely durable and recyclable

Model	Dimensions & Thickness (with 2T PVC Tile)	Concentrated Load 1/2 Edge	Ultimate Load 1/2 Edge
ABS 650	□ 600 mm x 38~44T	500 kgf	1,250 kgf
ABS 601FL	□ 600 mm x 45~47T	700 kgf	1,400 kgf
ABS 601LC	□ 600 mm x 46~50T	800 kgf	1,600 kgf
ABS 601C	□ 600 mm x 50~51T	900 kgf	2,200 kgf
ABH 602C	□ 600 mm x 40~55T	1,100 kgf	2,200 kgf
ABH 602F1S	□ 600 mm x 50~51T	1,100 kgf	2,500 kgf
ABH 602F1	□ 600 mm x 50~51T	1,300 kgf	3,000 kgf
ABH 602EXR	□ 600 mm x 50~51T	1,400 kgf	3,600 kgf
ABH 602EXC	□ 600 mm x 50~55T	1,500 kgf	3,200 kgf
ABH 2000	□ 600 mm x 50~55T	1,600 kgf	4,000 kgf
ABH 636	□ 600 mm x 50~55T	3,000 kgf	6,000 kgf
ABH 240NSTR	□ 24"x 41~50T	1,500 lbf	4,000 lbf
ABH 240NEXR	□ 24"x 46~50T	2,200 lbf	5,700 lbf
ABH 240STR	□ 24"x 50T	2,600 lbf	5,200 lbf
ABH 240EXR	□ 24"x 50~59T	3,300 lbf	6,600 lbf



<Sample Testing Result ABH 602C 1/2 Edge>



<Sample Testing Result APH 602C 1/2 Edge>

# Perforated Panels

## Perforated Panels

Hae Kwang's Perforated Panels with 1,296 or 1,024 chamfered holes provide all the features of Solid Panels and nominal air open ratios ranging from 14~26% to meet specific airflow requirements inside cleanrooms. Each Perforated Panel is carefully checked to eliminate any potential contaminants, including adhesive residues.

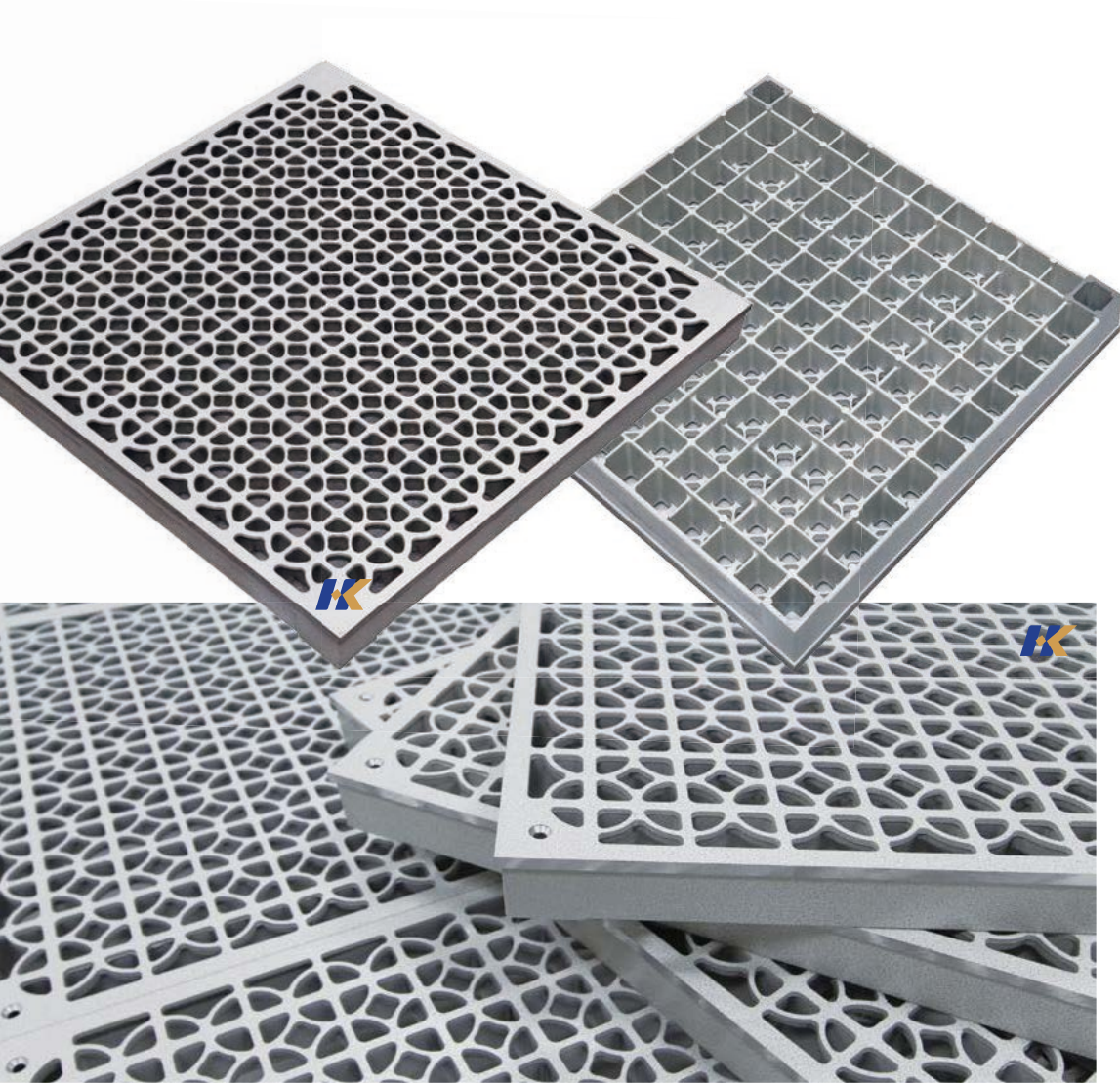
### Advantages

- Nominal Air open ratios ranging from 14% to 26%
- Excellent loading capacity: 500~3,000 kgf @ 2 mm deflection (=1,100~6,600 lbf @ 0.08 inch deflection)
- Precisely manufactured to meet dimensional requirements with minimum tolerance
- Minimum emission of Volatile Organic Compounds (VOC's)
- Strict quality control to meet electrostatic or conductivity requirements
- Extremely durable and recyclable

Model	Dimensions & Thickness (with 2T PVC Tile)	Open Ratio	Concentrated Load 1/2 Edge	Ultimate Load 1/2 Edge
APS 650	□ 600 mm x 38~44T	16, 20%	500 kgf	1,250 kgf
APS 601FL	□ 600 mm x 45~47T	18, 20%	600 kgf	1,200 kgf
APS 601LC	□ 600 mm x 46~50T	14, 16, 18, 22%	700 kgf	1,400 kgf
APS 601C	□ 600 mm x 50~51T	14, 16, 18, 22%	800 kgf	2,000 kgf
APH 602C	□ 600 mm x 40~55T	14, 16, 18, 22%	1,000 kgf	2,200 kgf
APH 602F1S	□ 600 mm x 50~51T	18, 20%	1,000 kgf	2,400 kgf
APH 602F1	□ 600 mm x 50~51T	18, 20%	1,200 kgf	3,000 kgf
APH 602EXR	□ 600 mm x 50~51T	14, 16, 18, 22%	1,300 kgf	3,500 kgf
APH 602EXC	□ 600 mm x 50~55T	14, 16, 18, 22%	1,400 kgf	3,000 kgf
APH 2000	□ 600 mm x 50~55T	14, 16, 18, 22%	1,600 kgf	3,800 kgf
APH 636	□ 600 mm x 50~55T	14, 16, 18%	3,000 kgf	6,000 kgf
APH 240NSTR	□ 24" x 41~50T	18, 22%	1,500 lbf	4,000 lbf
APH 240NEXR	□ 24" x 46~50T	18, 22%	2,200 lbf	5,700 lbf
APH 240STR	□ 24" x 50T	14, 16, 18, 22%	2,400 lbf	4,800 lbf
APH 240EXR	□ 24" x 50~59T	14, 16, 18%	3,000 lbf	6,000 lbf



# Grating Panels

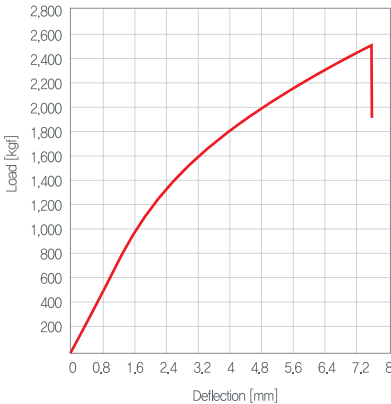


## Grating Panels

Hae Kwang's non-directional grating patterns with nominal air open ratios ranging from 51~54% facilitate unrestricted smooth airflow and minimize vibration from rolling loads. Hae Kwang's Grating Panels are ideal for use in air-return chase and ballroom areas.

### Advantages

- Nominal Air open ratios ranging from 51% to 54%
- Excellent loading capacity:  
500~1,000 kgf @ 2 mm deflection  
(=1,100~2,200 lbf @ 0.08 inch deflection)
- Available with conductive or nonconductive coating
- Strict quality control to meet electrostatic or conductivity requirements
- Extremely durable and recyclable



<Sample Testing Result AGH 608 1/2 Edge>

Model	Dimensions & Thickness	Open Ratio	Concentrated Load 1/2 Edge	Ultimate Load 1/2 Edge
AGLS 609	□ 500 mm x 34~41T	51%	500 kgf	1,250 kgf
AGS 609	□ 600 mm x 38~44T	51%	700 kgf	1,750 kgf
AGH 607	□ 600 mm x 45~47T	54%	900 kgf	1,800 kgf
AGH 608	□ 600 mm x 41~42T	51%	1,000 kgf	2,000 kgf
AGS 240	□ 24"x 49~51T	49%	1,540 lbf	3,080 lbf
AGH 240EX	□ 24"x 50~55T	51.5%	2,200 lbf	4,400 lbf
AGH 240UEX	□ 24"x 50~59T	45%	3,300 lbf	6,600 lbf

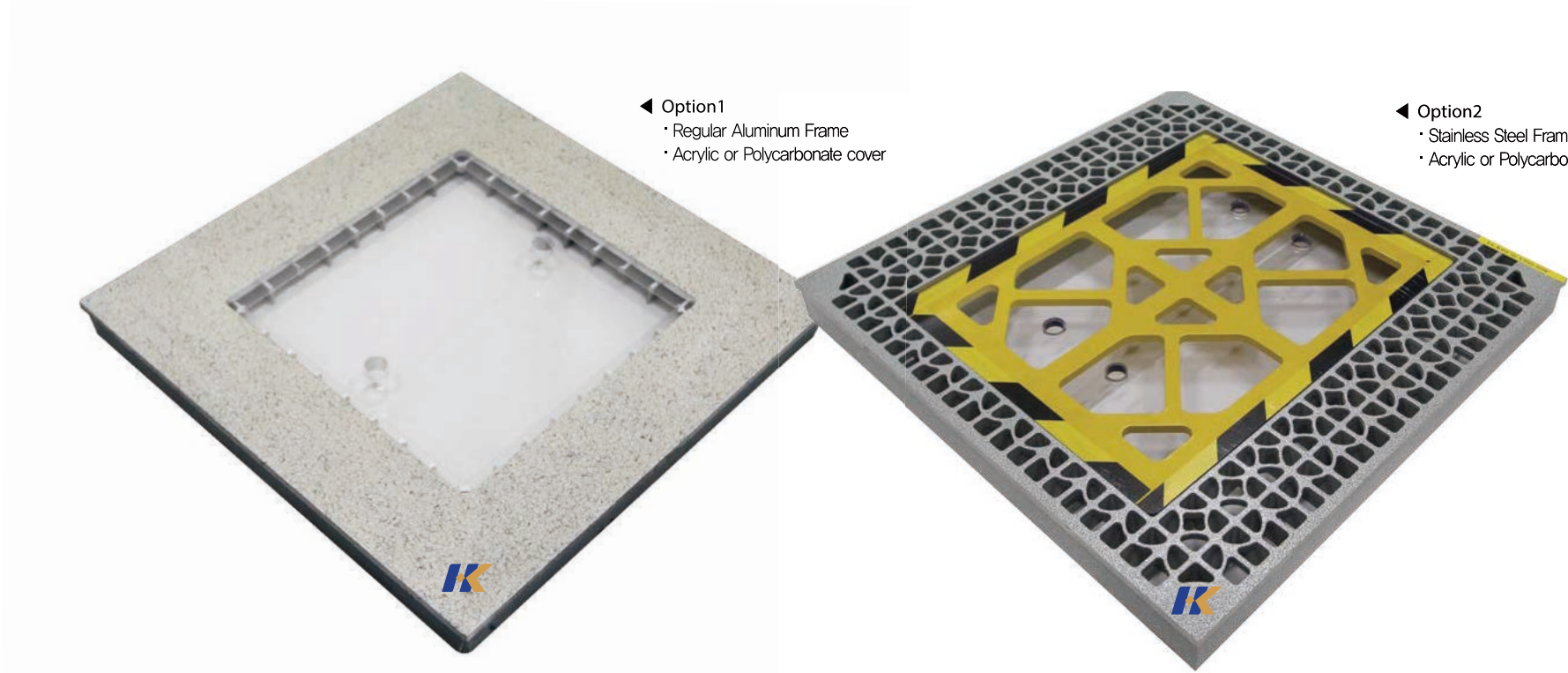
# View Panels

## View Panels

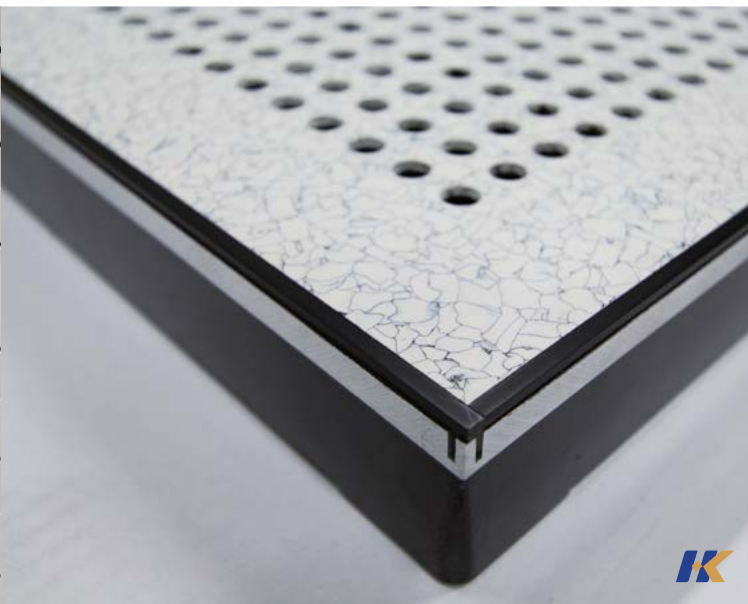
Manufactured per dimensional specifications of customers, View Panels allow visibility and easy access to gauges, piping, and electrical wiring that run under cleanroom floors.

### Advantages

- Customized acrylic or polycarbonate inserts allow visibility and easy access to under cleanroom floors
- Can be customized to meet specific loading requirements with regular Aluminum frame or stainless steel frame







## HAE KWANG Panel Options

- 16 ..... Corner Locking System
- 17 ..... Epoxy Powder Coating
- 18 ..... Aluminum Damper
- 19 ..... Edge Trim
- 20 ..... Nickel Chrome(NiCr) Plating  
SUS Plate  
Checked Plate
- 21 ..... PVC Tile Color Options



## Corner Locking System

### Corner Locking System

Corner Locking System affixes the four corners of Aluminum Panels to the pedestal heads with SUS or steel bolts and minimizes movements of and gaps between Aluminum Panels after installation, especially during the tool move-in process.

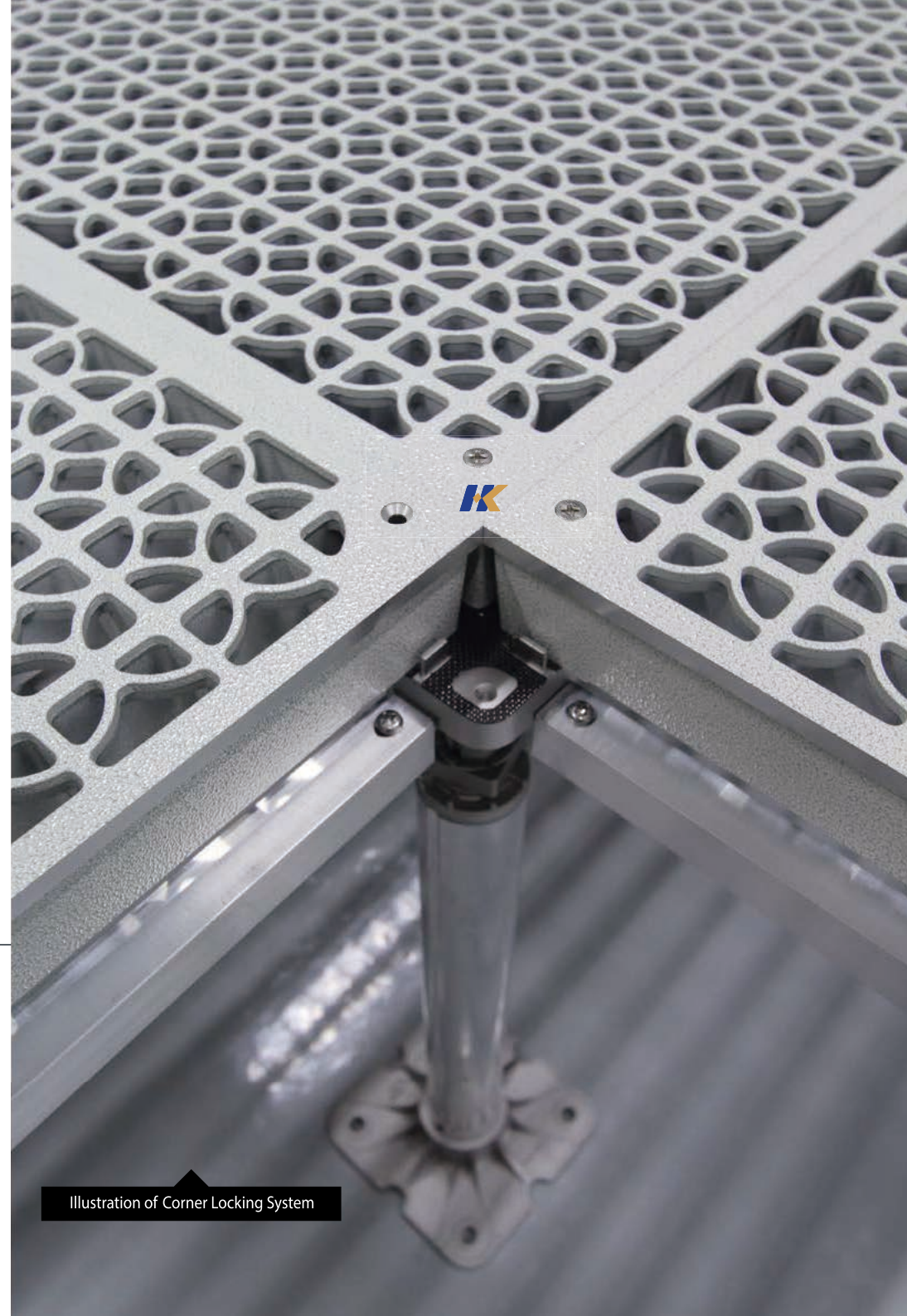


Illustration of Corner Locking System

## Epoxy Powder Coating

### Epoxy Powder Coating

Epoxy Powder Coating enhances electrical conductivity, chemical resistance, and abrasion resistance of Aluminum Panels.

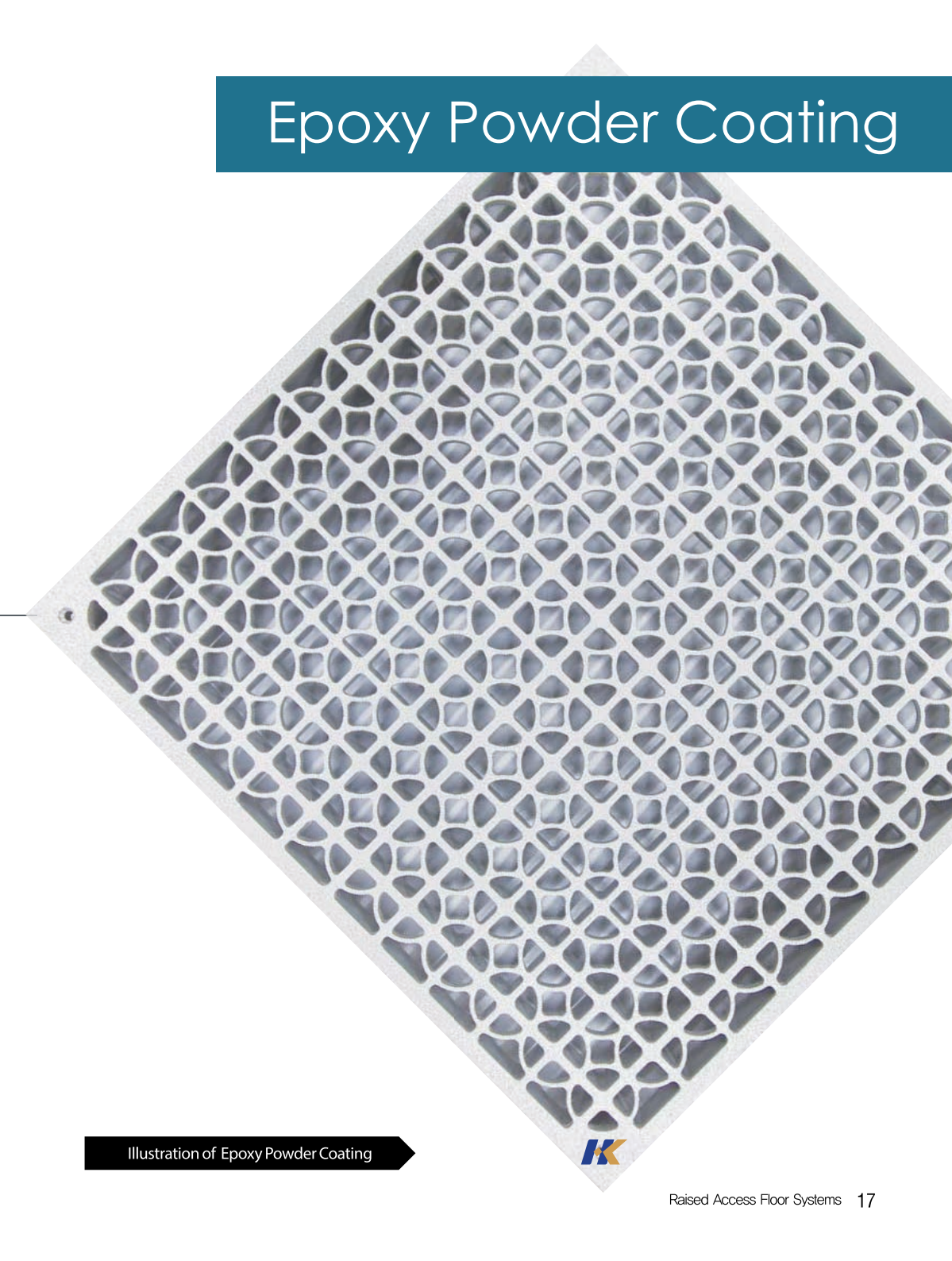


Illustration of Epoxy Powder Coating



## Aluminum Damper

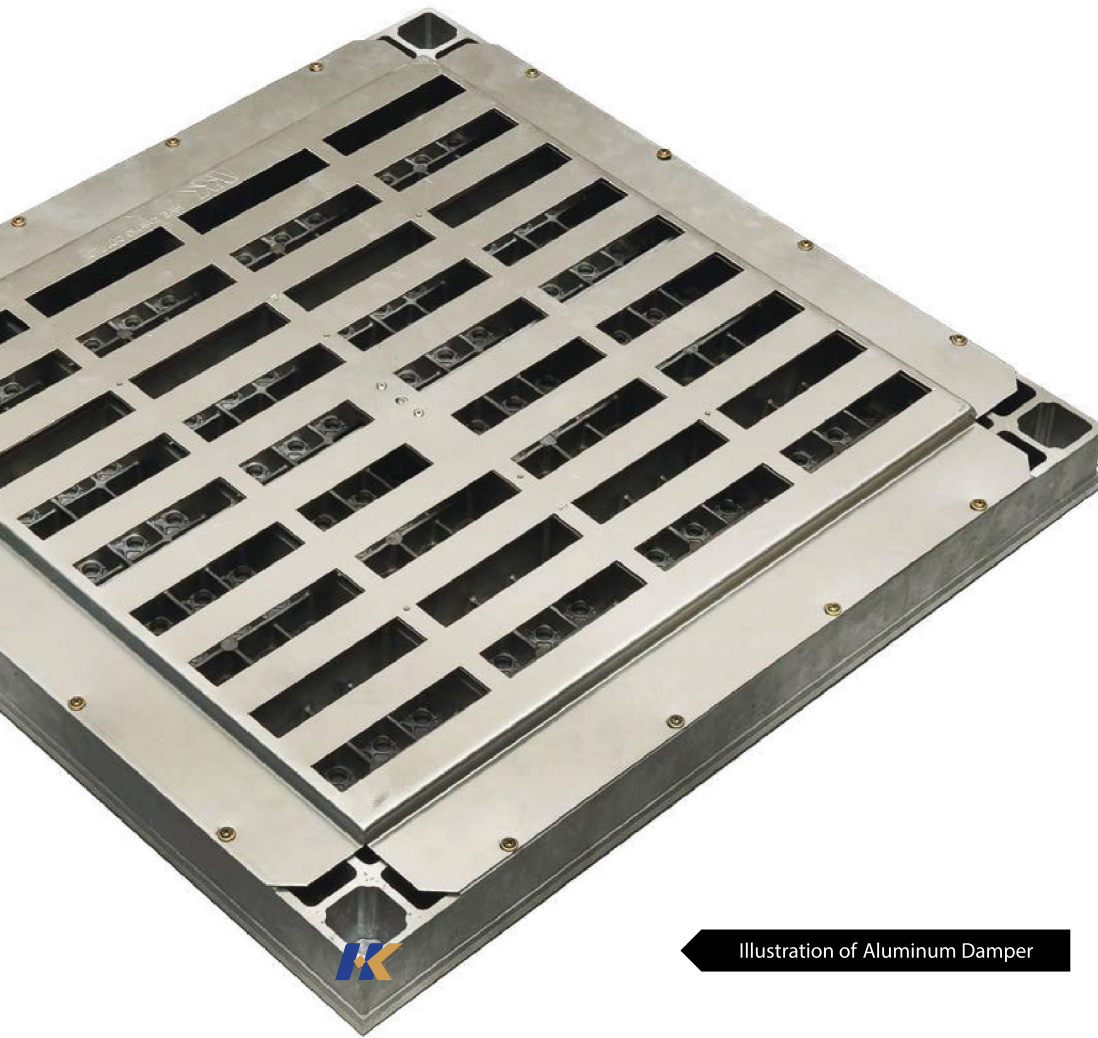


Illustration of Aluminum Damper

### Aluminum Damper

Hae Kwang's Perforated or Grating Panels can be delivered with Aluminum Dampers. Easily adjustable from the top of panels, the Aluminum Dampers allow customers to effectively maintain uniform balancing of airflow inside cleanrooms.

## Edge Trim

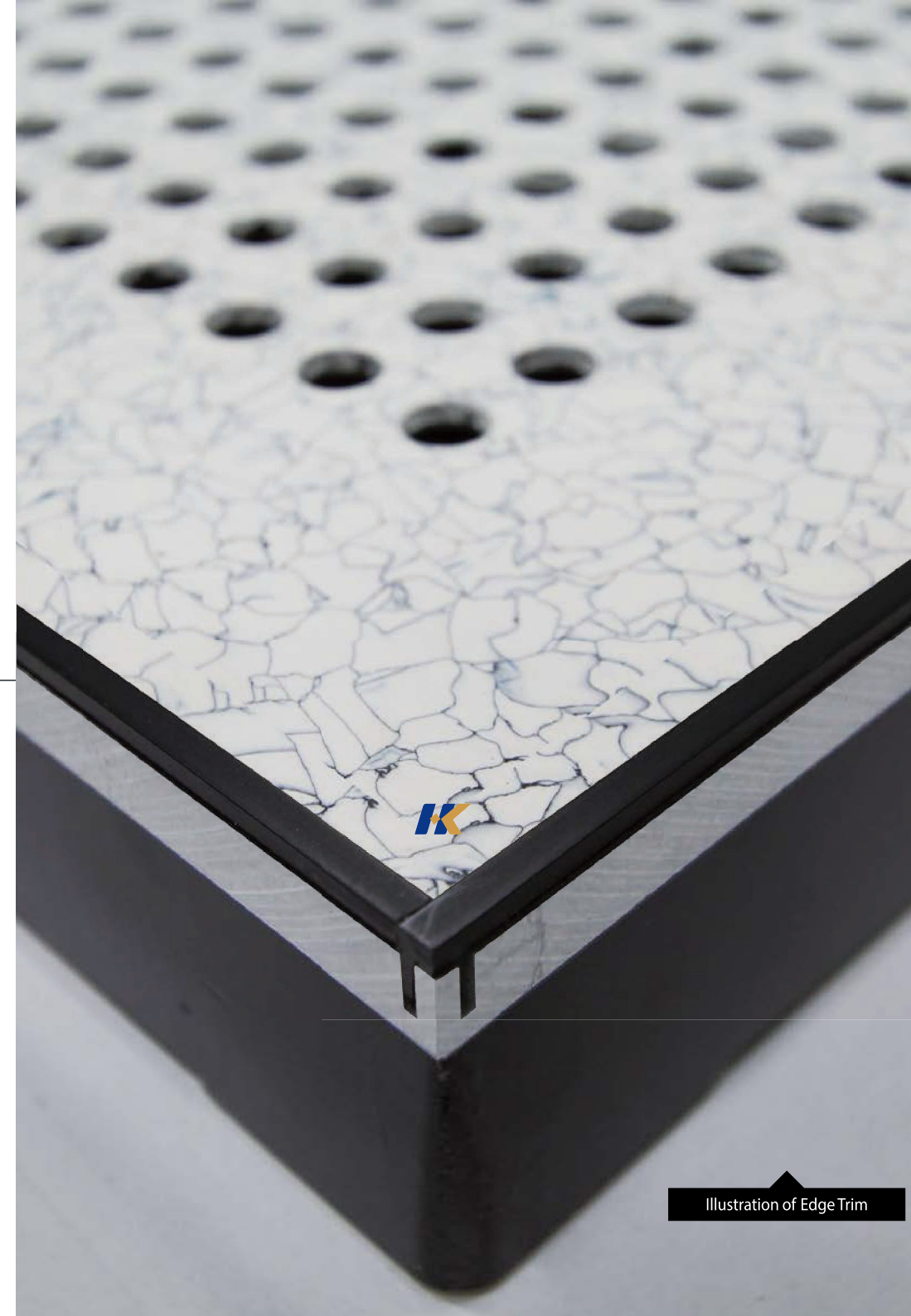


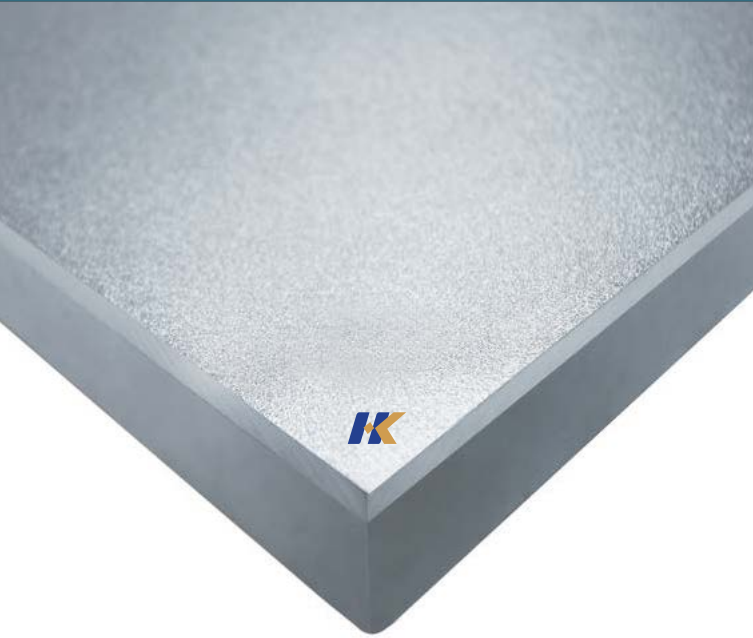
Illustration of Edge Trim

### Edge Trim

PVC trims on the edges of Aluminum Panels can prevent slipperiness and delamination or deformation of PVC tiles.

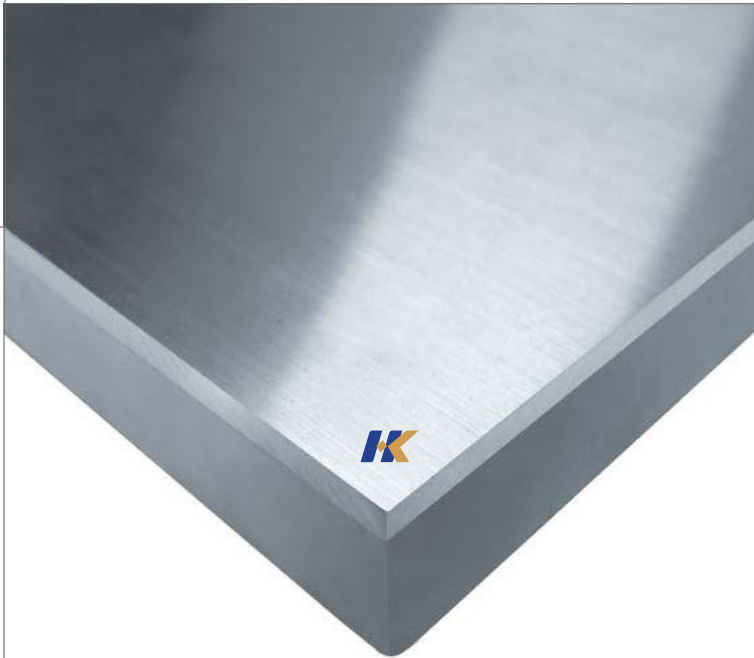


# Nickel Chrome(NiCr) Plating



## SUS Plate

Mainly installed in Automatic Guided Vehicle (AGV) lines inside cleanrooms, Aluminum Panels atatched with SUS Plates have higher loading capacities and stronger resistance to abrasion and decoloring than normal Aluminum Panels.

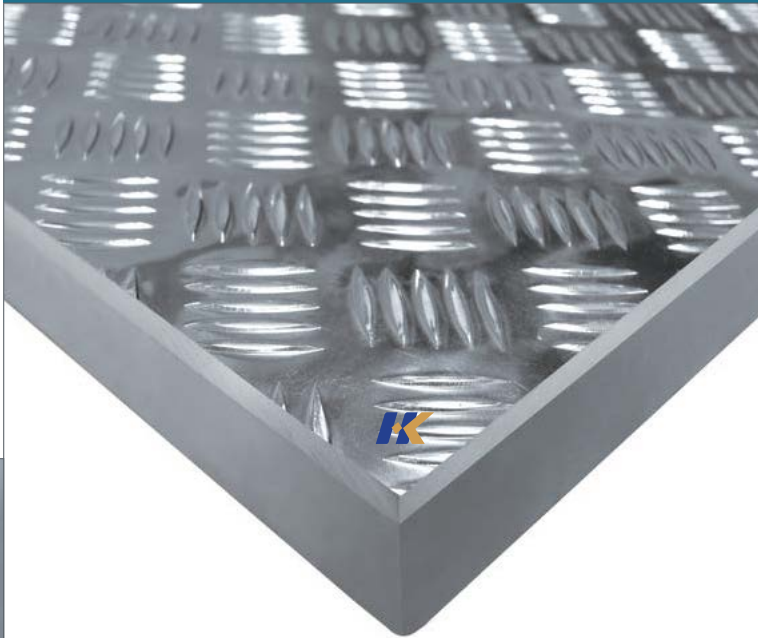


## SUS Plate

## Nickel Chrome(NiCr) Plating

Typically applied to Aluminum Panel installed in tool move-in areas and Automatic Guided Vehicle (AGV) lines inside cleanrooms, Nickel Chrome(NiCr) Plating strengthens panels' resistance to chemicals, corrosion, and abrasion. Moreover, NiCr plating minimizes decoloring and enhances the antistatic features of Aluminum Panels.

# Checked Plate



## Checked Plate

Preventing slipperiness and enhancing abrasion resistance of Aluminum Panels, Checked Plates are typically attached on top of Aluminum Panels in areas of heavy foot traffic inside cleanrooms.

# PVC Tile Color Options

## PVC Tile Color Options

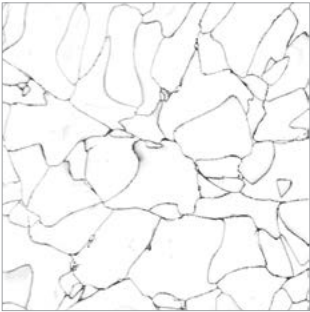
PVC tiles on Aluminum Panels allow for more comfortable walking while controlling electrostatic discharge or electrical conductivity on the floors of cleanrooms. Various color options of PVC tiles provide different interior choices.

	White	#1, #2, #3, #4, #5
	Light Blue	#6
	Light Green	#7

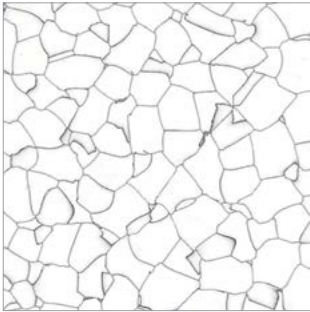
	Light Red	#8
	Grey	#9
	Black	#10



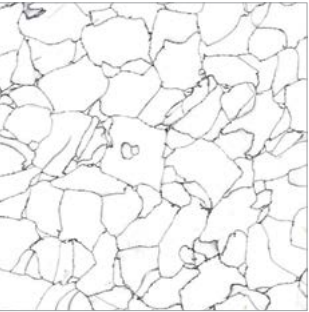
#1



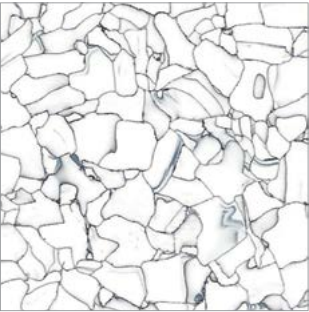
#2



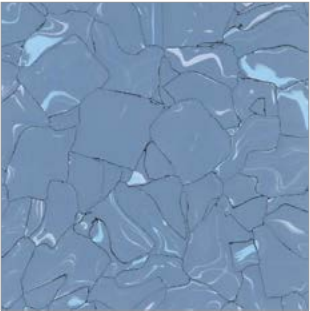
#3



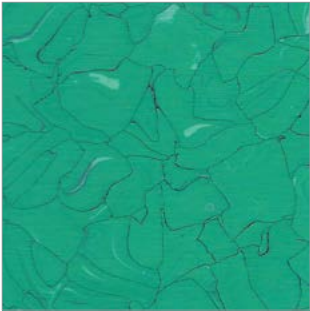
#4



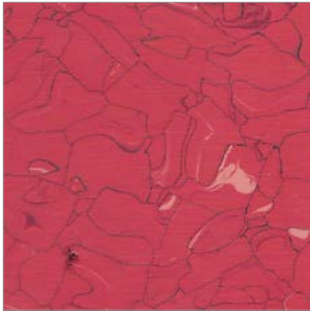
#5



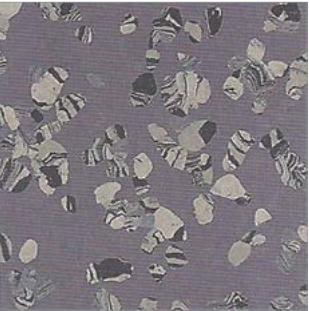
#6



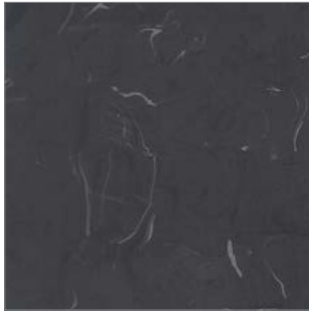
#7



#8



#9



#10





## HAE KWANG Understructure Systems

· 24	.....	Pedestals
· 25	.....	Stringer
· 26	.....	Seismic Bracings
		Reinforcement System
· 27	.....	Air Separation System
		Spanning System
· 28	.....	Understructures
· 30	.....	Understructure Testing and Simulation



# Pedestals

## Pedestals

Available in Aluminum, steel or combination thereof, Hae Kwnag's custom-designed Pedestals have been proven to meet any axial loading requirements. Moreover, Hae Kwang's Pedestals provide flexibility in height adjustment (typically  $\geq \pm 25$  mm).

[Head]



[Wire Mesh Pad & Tile]



[Pedestal]



## Strengths and Properties

- Finished Floor Height (FFH): 160~1,500 mm (6.30~59.06 inch)
- Axial Loading Capacity: 4,000~15,000 kgf (8,800~33,000 lbf)
- Available in bare Aluminum, electrocoating(e-coating), or Epoxy Powder Coating finishes.

Type	FFH Height ±25 (mm)	Detailed Specifications (mm)		Axial Load (↓5%)
Aluminium S/D	160~600	Al. Base Plate : $\Phi 113.6$ Al. Tube : $\Phi 28.4$ Al. Cap : $\Phi 36*14$	Al. Bolt : 7/8 Inch Al. Nut : 31*16.5*7/8 Inch Al. Head : 116*116*41.5	4,000 kgf (8,800 lbf)
Aluminium H/D	250~1,000	Al. Base Plate : 150*150 Al. Tube : $\Phi 50.7$ Al. Adaptor : $\Phi 50.8*47.3$	Al. Bolt : 1 Inch Al. Nut : 35*17.4*1 Inch Al. Head : 116*116*41.5	5,800 kgf (12,500 lbf)
Steel S/D	300~1,000	St. Base Plate : 130*130*3.2T St. Tube : $\Phi 48$ St. Top Plate : $\Phi 58*9T$	St. Bolt : M16 St. Nut : 27*16T*M16 2ea & Locking Nut 1ea Al. All Long Head : 116*116*90	7,500 kgf (16,500 lbf)
Steel H/D	300~1,500	St. Base Plate : 150*150*3.2T St. Tube : $\Phi 60.5$ St. Top Plate : $\Phi 70*9T$	St. Bolt : M16 & M20 St. Nut : For M16 → 27*16T*M16 2ea & Locking Nut 1ea For M20 → 29*16T*M20 3ea Al. All Long Head : 116*116*90	M16 8,000 kgf (17,600 lbf) M20 10,000 kgf (22,000 lbf)
H2 Pedestal	215 & 250 (Only)	Al. Base & Tube : 110*110*85 (All-in-one support)	St. Bolt : 1 Inch*120L (Pitch 85) St. Bolt : 1 Inch * 145L (Pitch 110) St. Nut : 1 Inch * 21T Al. H2 Head (1 Inch Steel)	15,000 kgf (33,000 lbf)
H3 Steel S/D Pedestal	250~1,000	St. Base Plate : 130*130*3.2T St. Tube : $\Phi 48$ St. Top Plate : $\Phi 58*9T$	St. Bolt : 1 Inch *125L St. Nut : 1 Inch * 21T Al. H3 Head (1 Inch Steel)	10,000 kgf (22,000 lbf)
H3 Steel H/D Pedestal	250~1,500	St. Base Plate : 150*150*3.2T St. Tube : $\Phi 60.5$ St. Top Plate : $\Phi 70*9T$	St. Bolt : 1 Inch *125L St. Nut : 1 Inch * 21T Al. H3 Head (1 Inch Steel)	10,000 kgf (22,000 lbf)

## Stringer

Hae Kwang's Aluminum Stringers are offered in two different sizes to be compatible with both 24" and 600 mm Raised Access Floor Systems. Providing excellent additional lateral support during tool move-in, the Stringers are available in bare Aluminum, electrocoating(e-coating), or Epoxy Powder Coating finishes.



Stringer

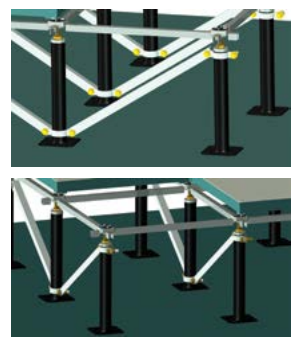
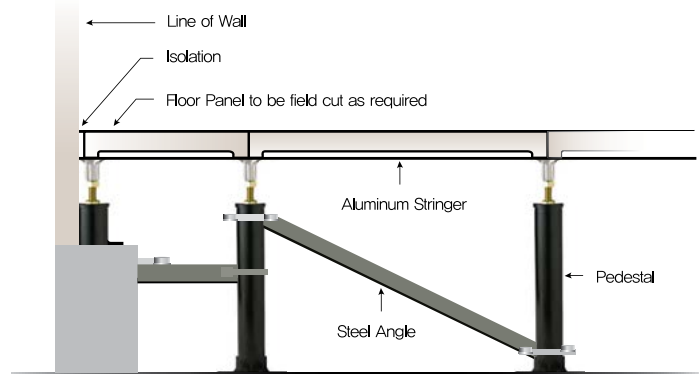




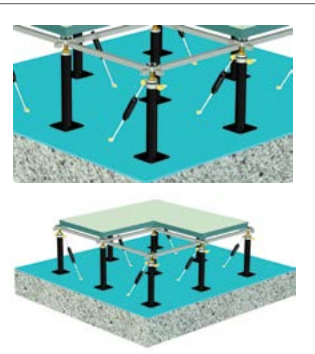
# Seismic Bracings

## Seismic Bracings

Hae Kwang's Seismic Bracings add strength to Pedestals against lateral forces exerted during tool move-in or seismic activity. They are typically installed along the inner perimeters or expansion joint areas of cleanrooms.



[Type 1 - Aluminum Bracing]

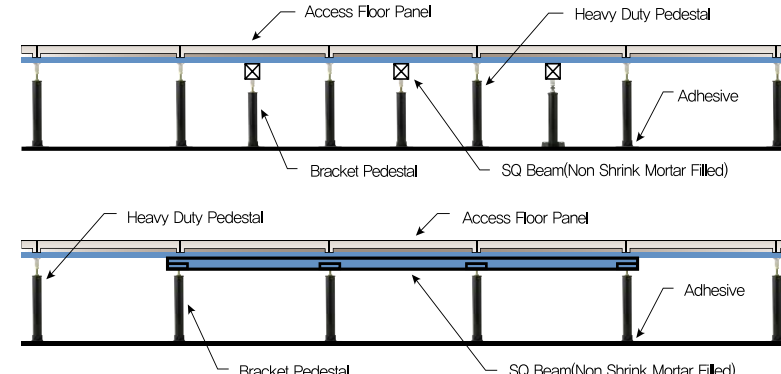


[Type 2 - Turnbuckle]

# Reinforcement System

## Reinforcement System

Hae Kwang's Reinforcement System increases the loading capacity of Raised Access Floor Panels installed in areas where heavy tools and equipments are relocated or situated.



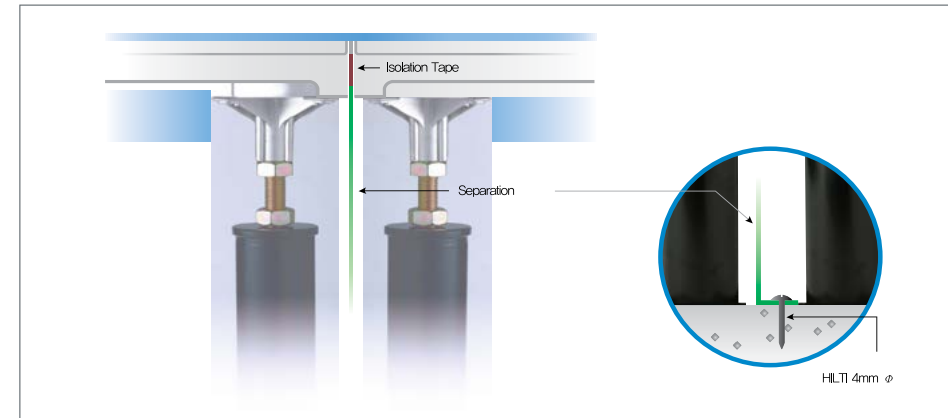
## Advantages

- Can be installed without changes in the existing structure
- More Convenient and lower-cost reinforcement system than reinforcement with H-Beam or additional posts.

# Air Separation System

## Air Separation System

Made of galvanized steel or Aluminum sheet with optional electro or Epoxy Powder Coating, Hae Kwang's Air Separation System can effectively segregate air streams under the floor of a cleanroom or between separate cleanrooms with different airflow requirements.



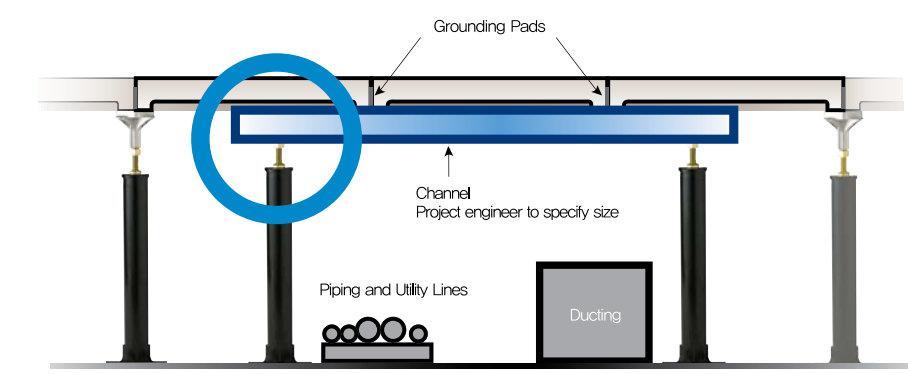
## Advantages

- Convenient separation of airflows under the floor without moving or changing the installed Raised Access Floor Panels

# Spanning System

## Spanning System

Hae Kwang's Spanning System enables the installation of Raised Access Floor Panels while maintaining the same sub-floor level layout for ducting, piping, or utility lines.



## Advantages

- Can be installed without a significant change in the existing structure
- Easier reinforcement than the conventional square pipe and post systems
- Convenient sub-floor level maintenance



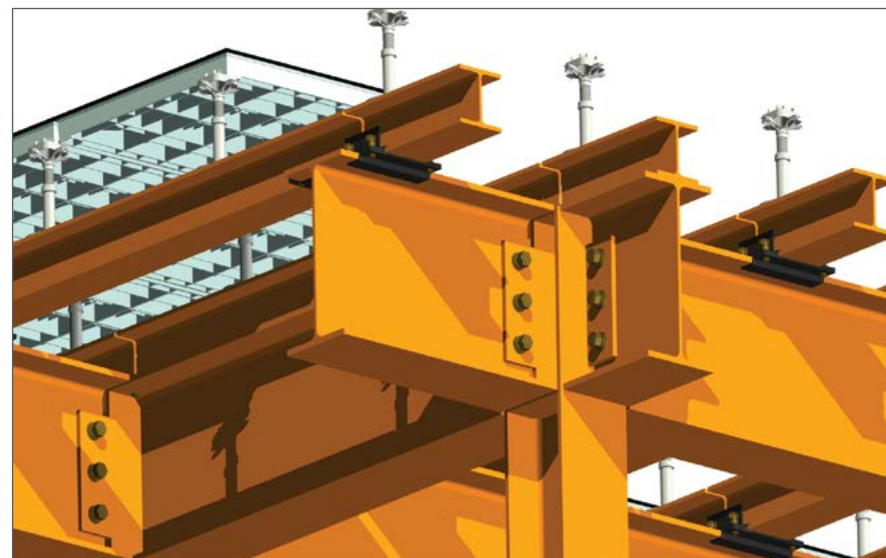
## ❖ Understructures

### “Pedestal Type” Understructures

Consists of Main and Sub H-beams, Hae Kwang's customized “Pedestal Type” understructure can provide large subfloor space and uniform loading capacity of more than 1,000 kgf/m<sup>2</sup> for cleanrooms without a separate return plenum.

#### Advantages

- Post Pitch: 600~3,600 mm (23.62~141.73 inch)
- Finished Floor Height (FFH): 250~3,000 mm (9.84~118.11 inch)
- Height adjustable  $\geq \pm 25$  mm range

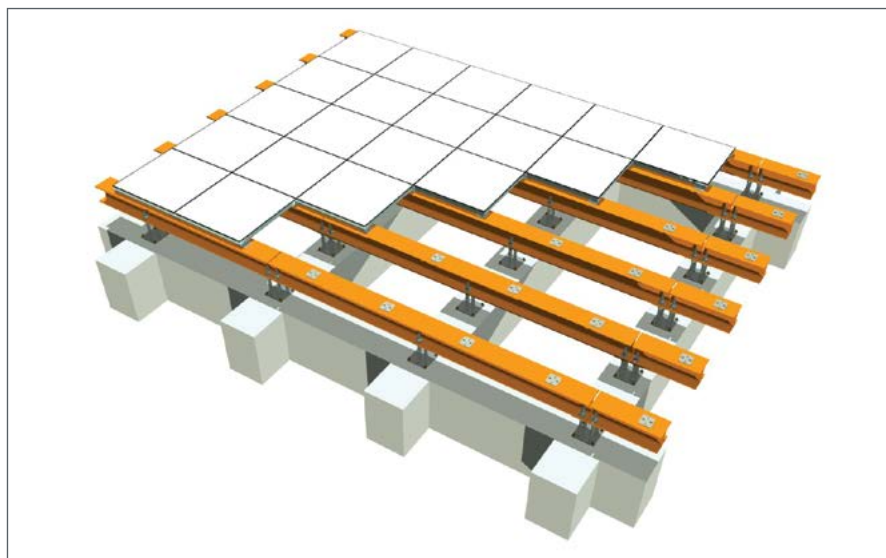


### “Flat Pad Type” Understructures

Typically installed on a concrete waffle structure, Hae Kwang's customized “Flat Pad Type” understructures allow for the faster installation of a Raised Access Floor System in cleanrooms with a high loading requirement. A typical “Flat Pad Type” understructure consists of a four-bolt-type base plate, sub H-beam, and metal flat pads.

#### Advantages

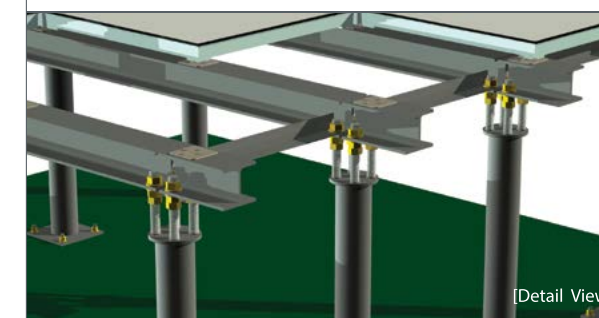
- Post Pitch: 600~3,600 mm (23.62~141.73 inch)
- Finished Floor Height (FFH): 250~400 mm (9.84~15.75 inch)
- Convenient and Cost-Efficient



## ❖ Illustrations



[Overview]

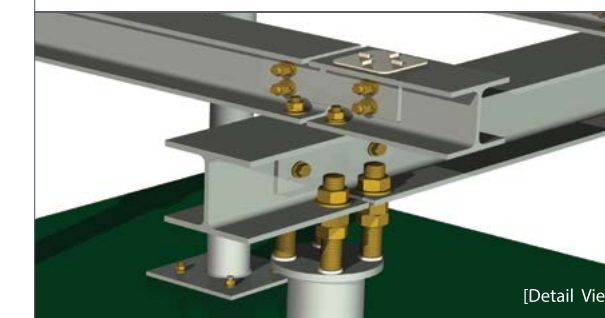


[Detail View]

[Single H-Beam + 4Bolt Post + Flat Pad Type]

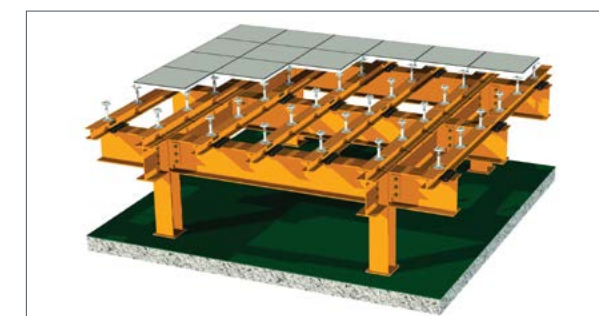


[Overview]

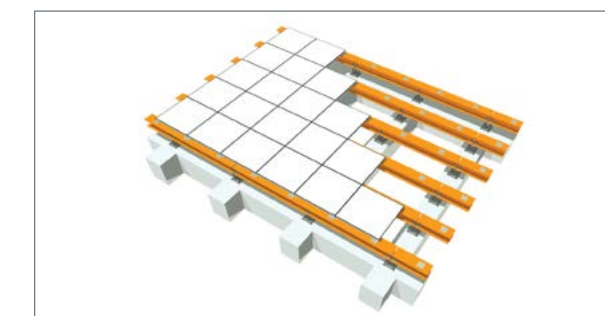


[Detail View]

[Double H-Beam + 4Bolt Post + Flat Pad Type]



[Single H-Beam + Pedestal Type]



[Single H-Beam + 4Bolt Stud Post + Flat Pad Type]



# Understructure Testing and Simulation

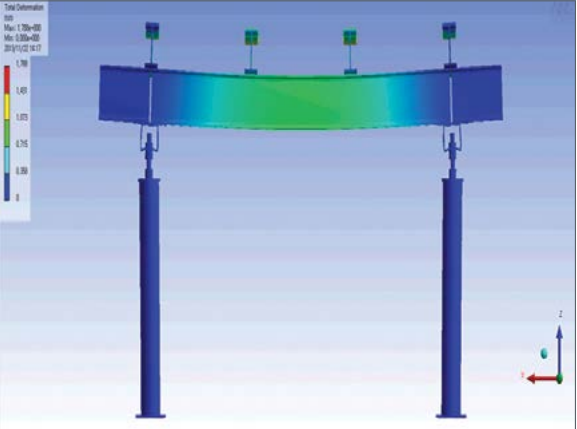
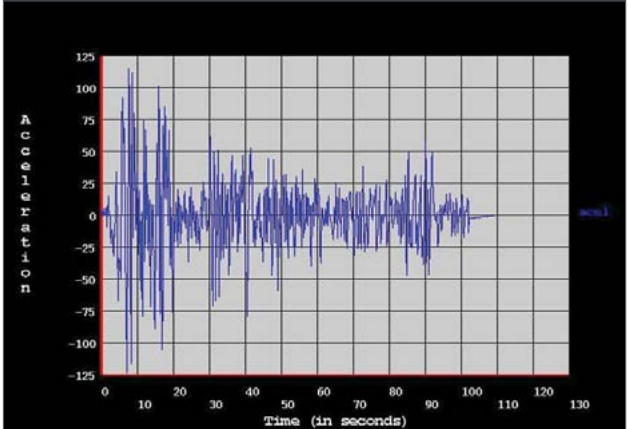
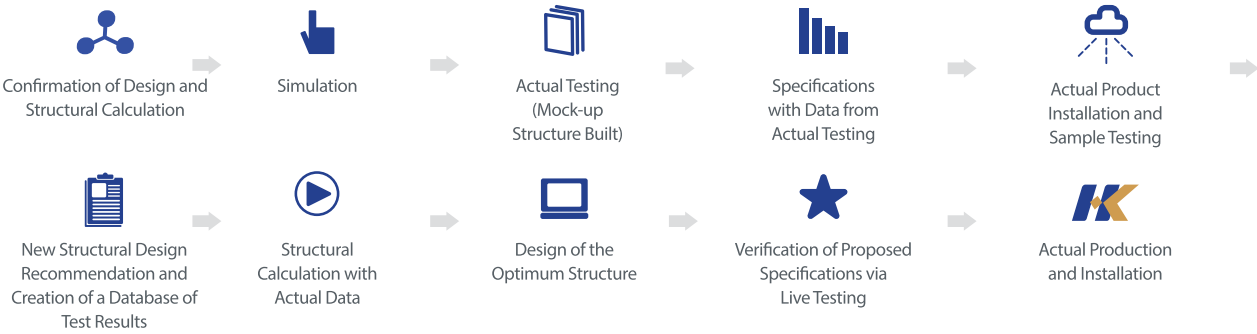
## Understructure Testing System

Via Hae Kwang's customized Understructure Testing System, customers can perform a live loading test on the Mock-up Raised Access Floor Systems that they intend to use in their cleanrooms.

Also, the accumulated testing data and know-how's enable Hae Kwang to help its customers find the optimal Raised Access Floor Systems that meet their needs at minimal costs.

1. Design Conditions		
Imposed Load for Horizontal Seismic Acceleration Ration Calculation	Ws	500 kgf/m <sup>2</sup>
Floor Height		
Floor Panel		
Pedestal Length	L	700 mm
Pedestal Bolt		
Pedestal Pipe		
Pipe Internal Diameter	d2	48.0 mm
Base Plate		
Allowable Bending Stress of St. Al/Steel	F	24.00 kgf/mm <sup>2</sup>
Young Modulus of Structural Al/Steel	E	21,000 kgf/mm <sup>2</sup>
Allowable Bond Stress of Base Plate	Fd	0.40 kgf/mm <sup>2</sup>

## Hae Kwang's Understructure Testing System is...



## Aluminum Panels

- In-house design capabilities
- Stable and reliable loading capacity to meet individual customers' needs
- Minimum emission of Volatile Organic Compounds (VOC's)
- Premium cleanroom products via a "Clean" manufacturing process

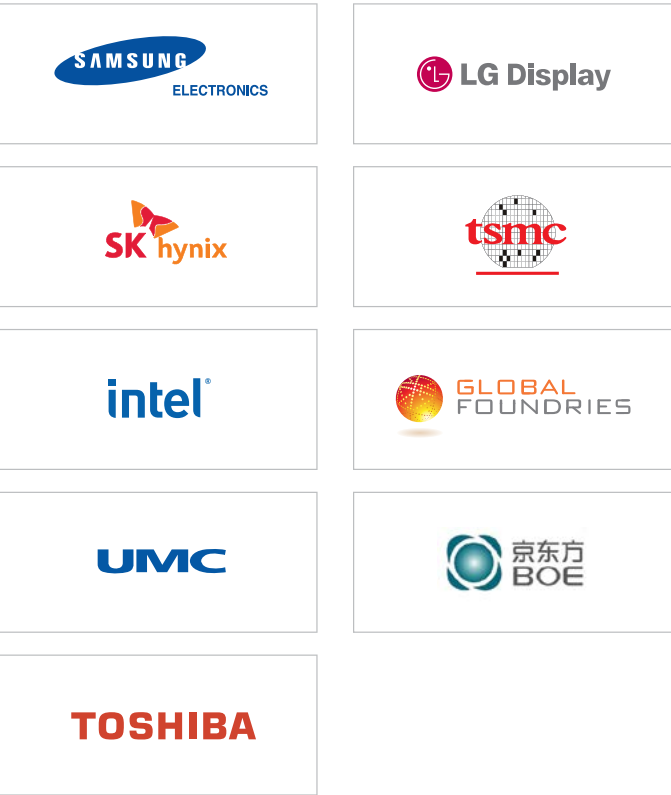
## Understructures

- Confirmation of customer's specifications via real-time testing simulations
- In-house understructure designing capabilities to provide customized solutions

## Raised Access Floor System Installations

- More than 20 years of accumulated installation know-how's
- Proven installation capability from various semiconductor, display, and data centers around the world

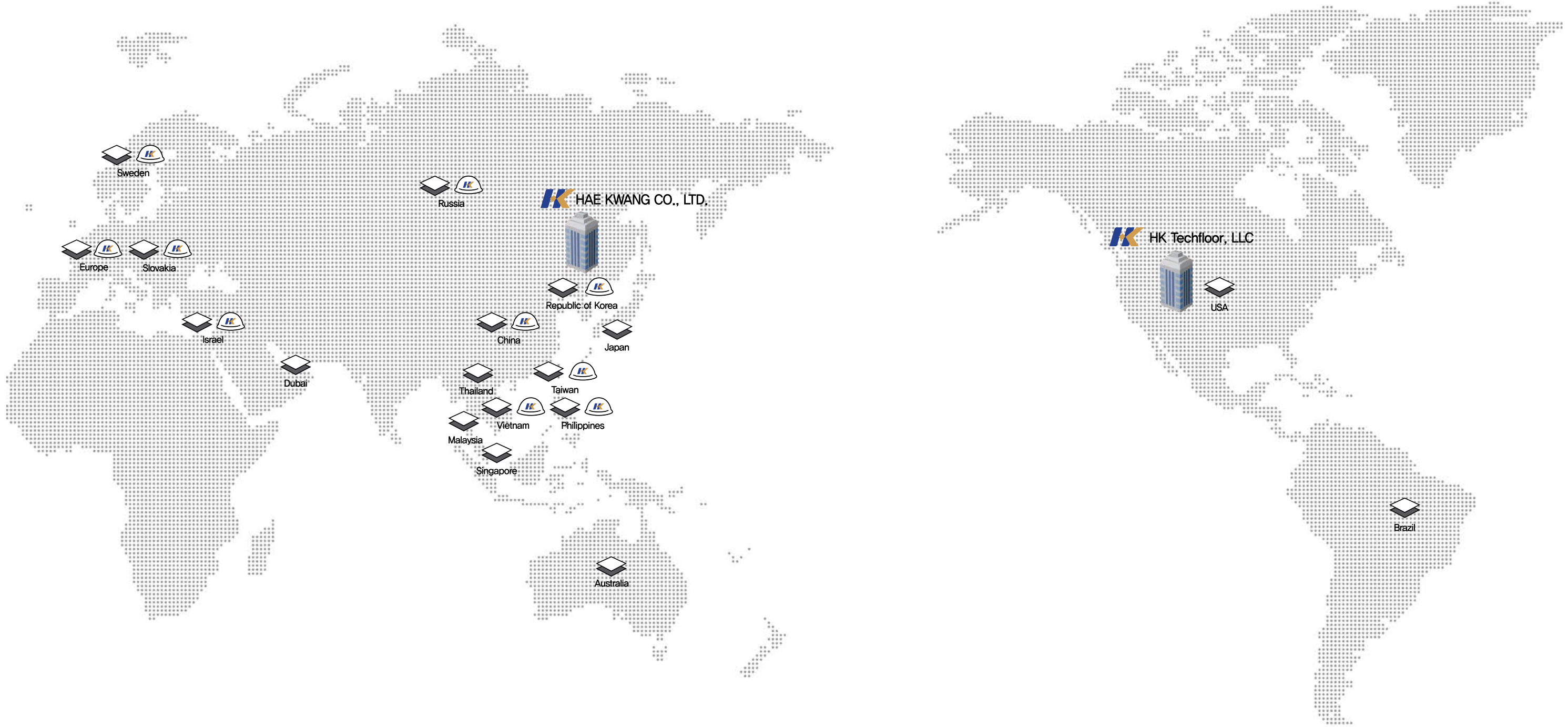
# Hae Kwang Advantages












Select Experiences

	Sweden	Motorola
	Europe	Intel Ireland IMEC 3SUN Zeiss
	Slovakia	Motorola
	Russia	Mikron Angstrom T
	Israel	Intel Tower Semiconductor
	Dubai	GULF Pharm
	Thailand	Western Digital Seagate
	Singapore	UMCi SSMC Showa Denko
	Malaysia	Western Digital Hewlett-Packard Seagate
	Philippines	Texas Instrument Analog Device
	Australia	AIN



	Product Delivery		Product Installation
---	------------------	---	----------------------

	Republic of Korea	Samsung Electronics Samsung Display LG Display SK Hynix StatsChipPAC Korea Advantest Korea Shinhan Bank Data Center POSCO Data Center
	USA	Intel GLOBALFOUNDRIES Samsung Electronics Austin Texas Instrument
	Taiwan	AUO UMC TSMC TICP Unimicron
	China	BOE Samsung Electronics Xian SK Hynix Micro Electronic SAE
	Japan	TOSHIBA TMD ROHM
	Vietnam	Viettel Samsung Electronics
	Brazil	Sembmarine





#### Locations in Korea

[ Headquarters/Factory ] <http://www.haekwang.com>  
487-25, Jingwang-ro, Iwol-myeon, Jincheon-gun, Chungcheongbuk-do, Republic of Korea (365-822)  
Tel: +82-43-534-3000 Fax: +82-43-534-3005

[ Gwacheon Sales Office ]  
2F, A-dong, Yongma Life Building, 5, Dwitgol 1-ro, Gwacheon-si, Gyeonggi-do, Republic of Korea (427-060)  
Tel: +82-2-3453-7711 Fax: +82-2-557-0048  
Email: [hkc7@haekwang.com](mailto:hkc7@haekwang.com)

#### Location in the U.S

[ HKTechfloor, LLC ] <http://hktechfloor.com>  
1430 N. Hobson St. Gilbert, AZ 85233  
Tel: +1-480-813-1007 Email: [hktech@hktechfloor.com](mailto:hktech@hktechfloor.com)

Business Card